



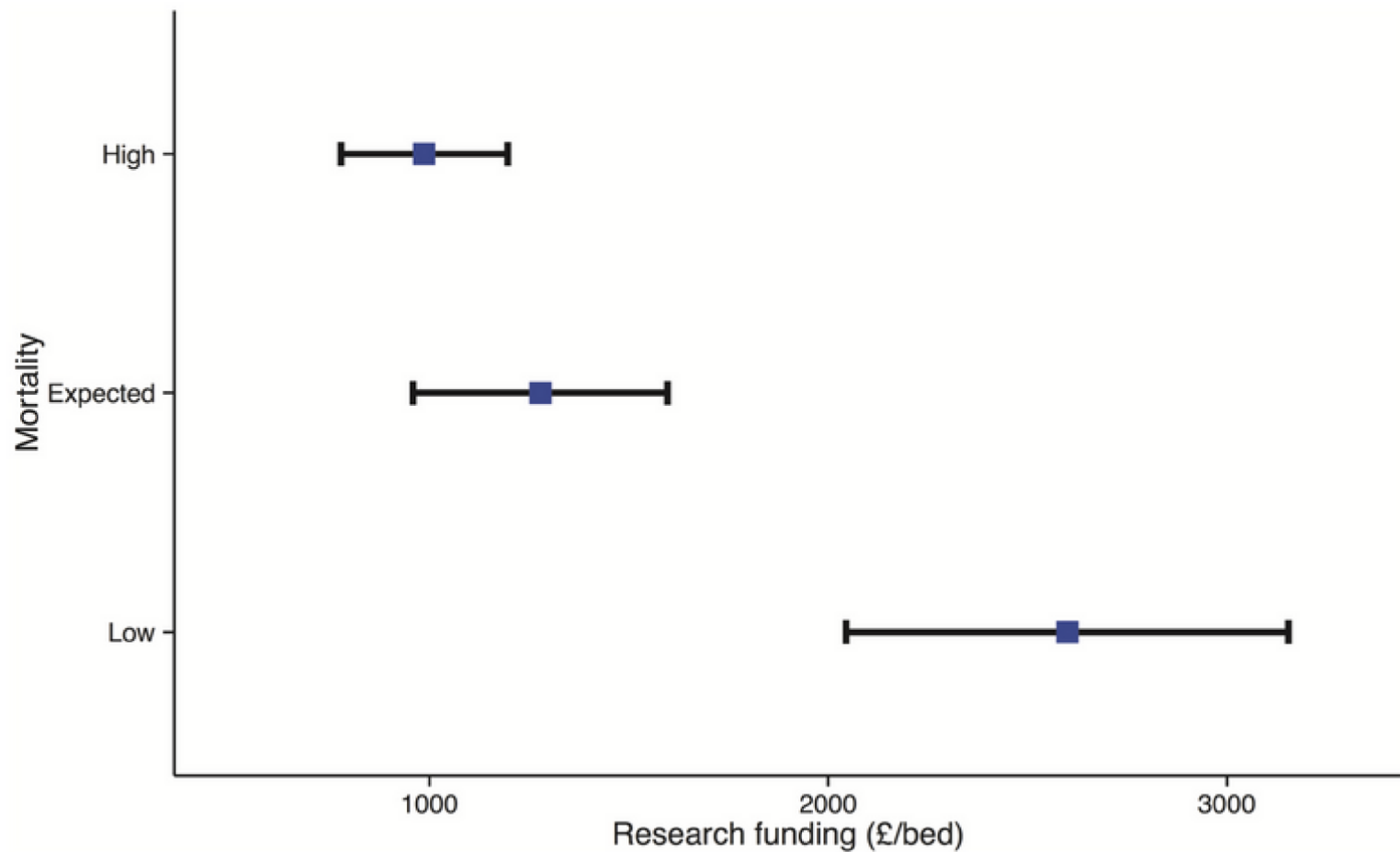
# TRAINEE RESEARCH NETWORKS

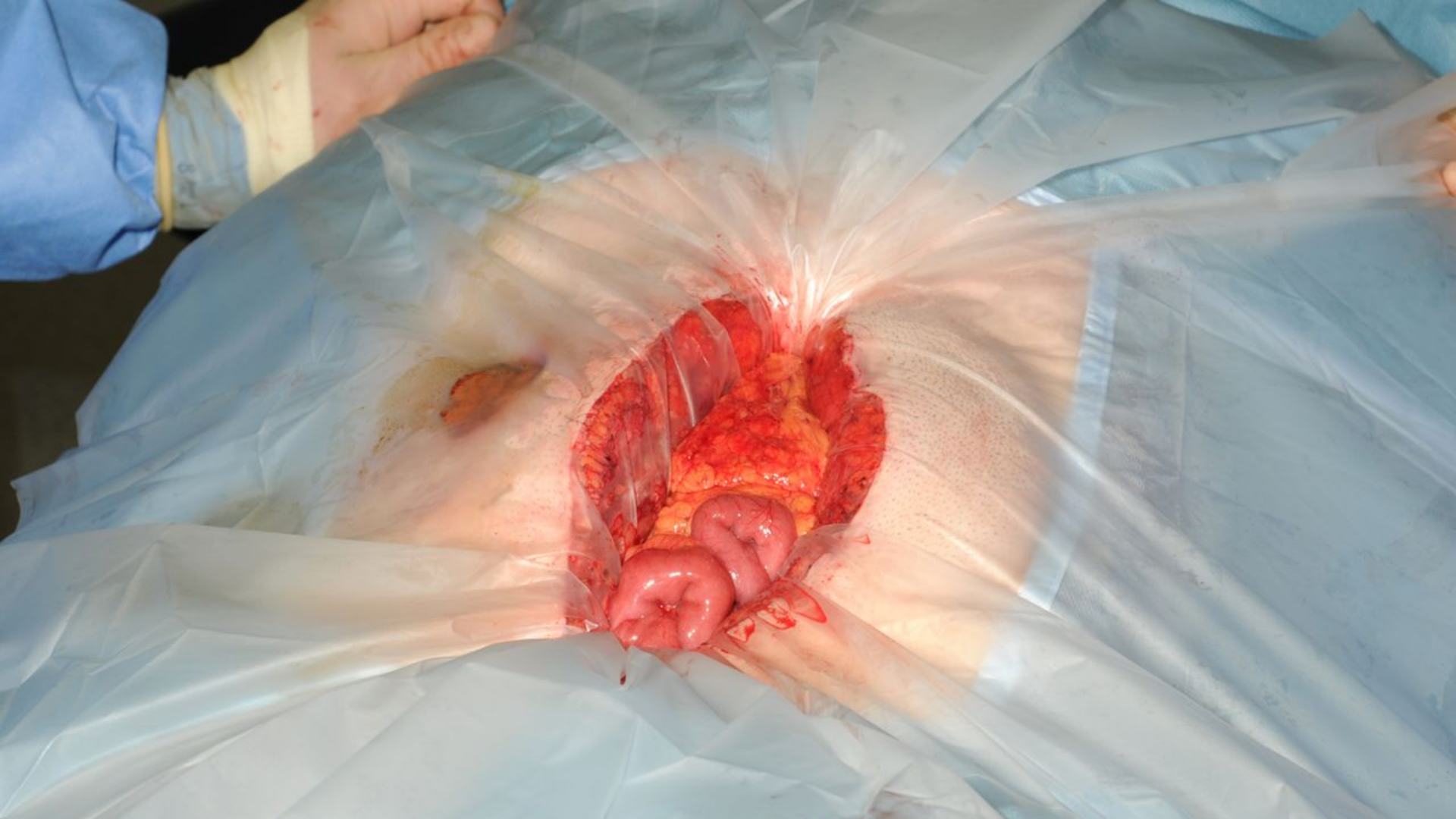
---

**DAN HORNER**  
**@RCEMP**  
**PROF**  
**SALFORD, UK**



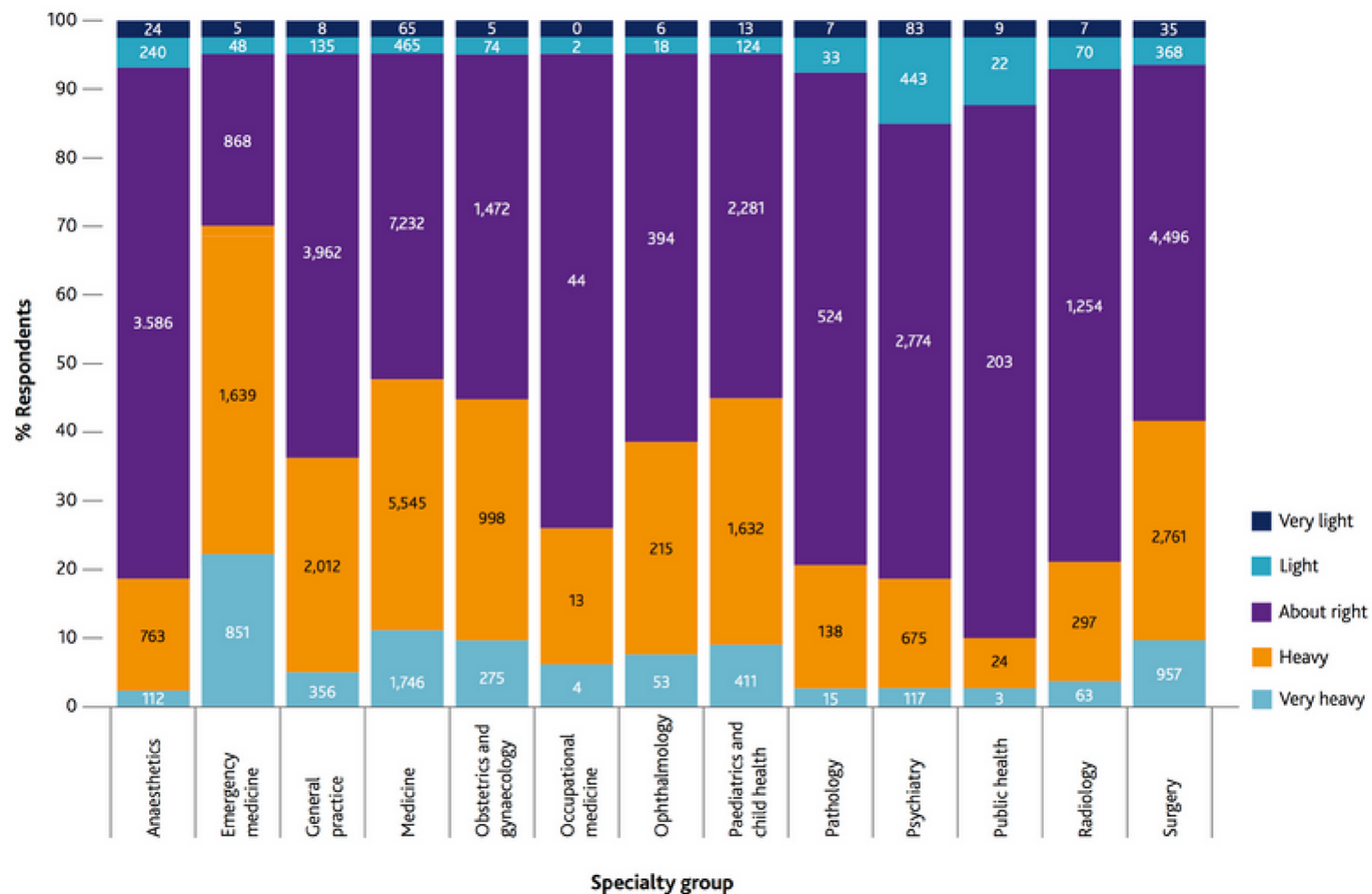
Your audience can join at [www.slido.com](http://www.slido.com)  
with this code: **#9999**



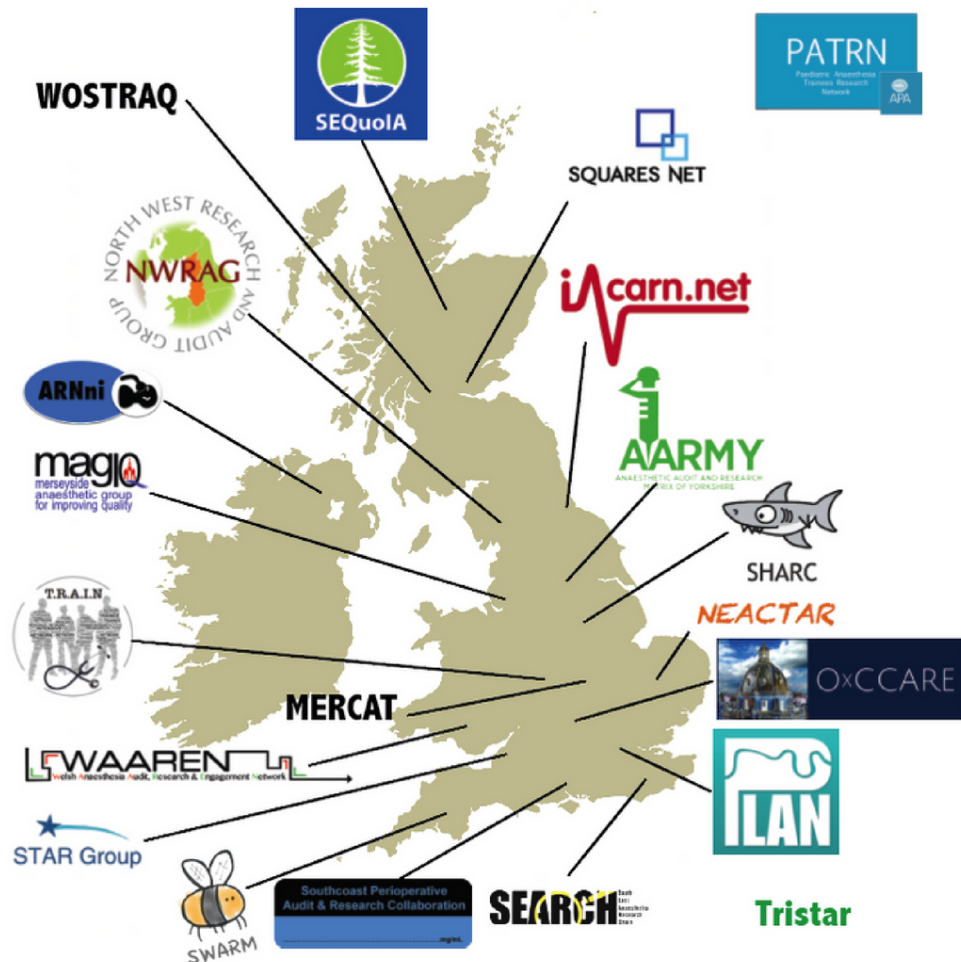




## Trainees: how would you rate the intensity of your work, by day in this post?










# TERN

TRAINEE EMERGENCY  
RESEARCH NETWORK



Marketing is no longer  
about the stuff that you  
make, but about the  
stories you tell

**Seth Godin**



**Laura Cottey**

@lauracottey

Follow



Want to know more about the new EM trainee research collaborative-TERN? Read all about it in the September

[@EmergencyMedBMJ](#) supplement

[@ternfellow](#) [@JamieVassallo](#) [@RCEMprof](#)

## Emergency medicine and clinical Research: Changing the relationship

James Vassallo<sup>1,2</sup>, Laura Cottey<sup>1,2</sup>, Tom Roberts<sup>3,4</sup>,  
Daniel Horner<sup>3,5</sup>

for 'academic' trainees. This relationship  
needs to change.

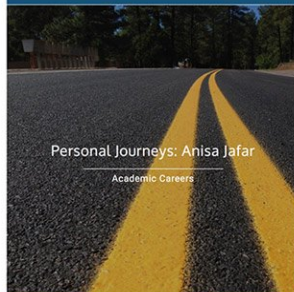






Breaking Evidence: EuSEM top scoring  
PEM abstracts 1-3  
Breaking Evidence

Breaking Evidence: EuSEM top scoring  
PEM abstracts 4-6  
Breaking Evidence



Breaking Evidence: the Rod Little  
Prize shortlisted abstracts 1-3  
Breaking Evidence

Breaking Evidence: the Rod Little  
Prize shortlisted abstracts 4-7  
Breaking Evidence



**Trainees must also complete two of the following:**

- Higher degree completed at any time (MSc, MPhil, MD, PhD).
- Authorship\*\* in any position (including corporate or collaborative) of two PubMed cited papers relevant to the specialty, not including case reports.
- A minimum of two presentations at national or international meetings.
- $\geq 5$  patients into a research ethics committee approved study or  $\geq 10$  patients into a multi-centre observational study.

---

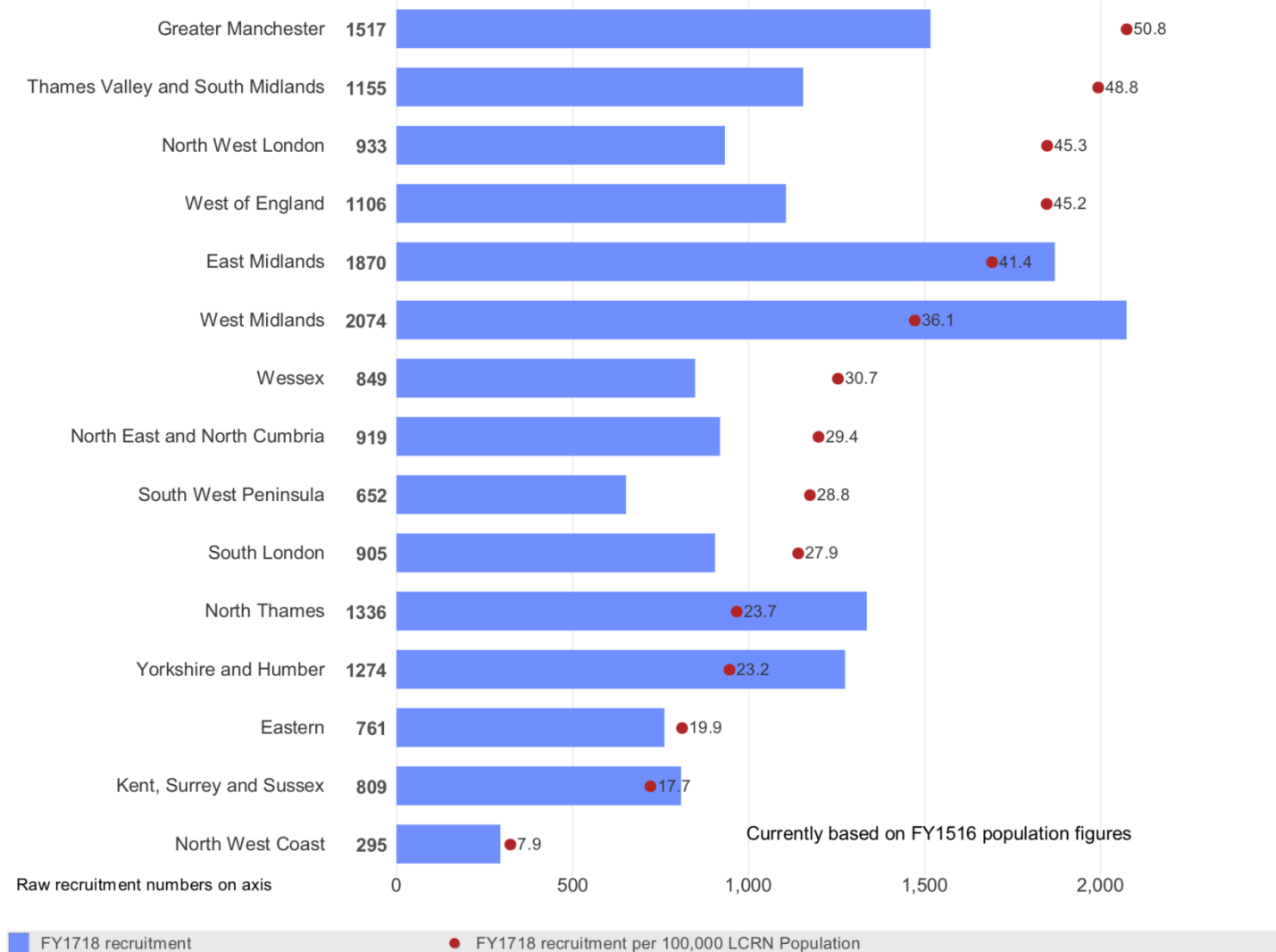
#### Local principle investigators

---

A Kingsnorth (Derriford Hospital, Plymouth); J Hardman (Good Hope Hospital, Sutton Coldfield); D Bowley (Heartlands Hospital, Birmingham); G Carlson (Hope Hospital, Manchester); S Selvaseter, A Khan (Leighton Hospital); A Hamouda (Maidstone Hospital); H Wegstapel (Medway Maritime Hospital); H Youssef (New Cross Hospital, Wolverhampton); S Clarke (Northwick Park, London); A Acheson (Queens Medical Centre, Nottingham); N Hurst (Royal Derby Hospital); P Boorman (Royal Devon and Exeter Hospital); R Patel (Russells Hall Hospital, Dudley); N Cruickshank (Sandwell Hospital); K Siddiqui (Tameside General Hospital, Manchester); R Pullan (Torbay Hospital); D Morton (University Hospital Birmingham); J Lengyel (University Hospital North Staffordshire); R Church (Walsall Manor Hospital); J Francombe (Warwick Hospital); M Paraoan (Wrightington, Wigan and Leigh).

---









International prospective observational Study on iNtrAcranial  
PreSsurE in intensive care (ICU)

The SYNAPSE-ICU Study



# Current Projects – HED

**Authors:** Tom Roberts, Dan Horner, Ann-Maree Kelly / **Codes:** HAP29 & CC20 / **Published:** 28/08/2018

## Introduction

Headache in the ED? What a headache.

Serious pathology lurks in the haystack, but not everyone can have an LP, MR angiogram, CT venogram and neurology admission. How do we decide who to investigate for secondary pathology? And how do we manage primary headache syndromes to provide good patient care but discourage repeat presentation?

BREAKOUT SESSIONS STREAM 3:  
Tuesday 27Nov2018 at #EMTA18  
Portfolio Careers Part 2: 1620 - 1720hrs

Research - TIRED Focus Group

Come and take part in a focus group to help inform one of the first TERN projects being designed to evaluate the need for recovery between shifts for Emergency Medicine doctors.



Trainee Emergency  
Research Network

**TIRED**

Trainee led evaluation of Inter-shift  
Recovery in the Emergency Department.

Focus Group Facilitators:  
Dr Blair Graham  
Dr Tom Roberts  
Professor Daniel Horner







Your audience can join at [www.slido.com](http://www.slido.com)  
with this code: **#9999**





# TRAINEE RESEARCH NETWORKS

---

**DAN HORNER**  
**@RCEMP**  
**PROF**  
**SALFORD, UK**