



"It's currently week 7 of my Emerge nurse-led research placement, and it's going great! The team has been so welcoming and I feel quite lucky that I am the first placement student they have had. I've learned loads, about clinical research generally, about informed consent, Good Clinical Practice (GCP), and how to properly, kindly and professionally approach eligible patients to recruit them for studies. I have been able to learn about neurological, cardiac and studies, and have been trained on multiple studies so I can get involved directly with patients. I now have a much greater appreciation for research within healthcare, and it's importance for the NHS, and it's potential to improve patient experience in the future." **Courtenay Mueller (Student Nurse)**

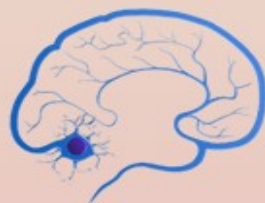


If you would like to become more research active, you can attend the Good Clinical Practice course run by the Edinburgh Clinical Research Facility for free or attend an online GCP run by NIHR here: [Good Clinical Practice \(GCP\) | NIHR](#)



With the recruitment of **INFORM** paused, EMERGE Paediatrics has since opened to a new study, **FIDO**.

Keep an eye out for our EMERGE Paediatrics team as they will be representing at the Edinburgh Children's Research Symposium organised by Child Life and Health held at the RHCYP on 10th May as well as the **MAST study** Investigator's Meeting held in Cambridge on 27th April.



EMERGE-CVRG

The Cerebrovascular Research Group (EMERGE-CVRG) has had a strong start to 2023! They have begun recruitment for the collection of brain tissue and cerebrospinal fluid for contribution to the **RAD Dementia Research Acceleration Project**. Recruitment to existing projects is going well, including increasing numbers to the **Tessa Jowell Brain Matrix Platform Study**, and two patients recruited to the Duration of External Neck Stabilisation following odontoid fracture in older or frail adults (**DENS**) study in one day in March. They will soon be extending their portfolio further by opening recruitment to **OCEANIC Stroke**, a commercial study looking at a Factor 11a (FXIa) inhibitor in the prevention of ischaemic stroke following acute non-cardioembolic ischemic stroke or high-risk TIA.

The CVRG team members are also looking forward to attending the European Stroke Organisation Conference (ESOC) being held in Munich in May!





27 patients recruited to date!

REMEMBER!

If you have a suitable patient, make a note of suitability on patient's EPR and **how likely you think the patient has an underlying cardiac cause of syncope** by using 1 (least likely) to 10 (most likely)



30 patients recruited to date!

A study looking into the clinical management, including biomarkers of febrile infants under 90 days old. The results of this study could be used to adapt our clinical practice in creating a clinical decision aid and using biomarker testing to support the care of febrile infants.



110 patients recruited to date!

The Point of Care Evaluation of high-sensitivity cardiac Troponin (POC-ET) study, is a multi-centre, prospective observational cohort study that aims to determine the optimal threshold and pathway for the early rule-out of MI using a Siemens POC device with a hs-cTnI assay in patients with suspected ACS. Use of these technologies could transform the efficiency of chest pain pathways, and permit testing to be extended to the pre-hospital setting.



NEW STUDY STARTING SOON!

A multicenter, international, randomized, placebo controlled, double-blind, parallel group and event driven Phase 3 study of the oral FXIIa inhibitor asundexian (BAY 2433334) for the prevention of ischemic stroke in male and female participants aged +18 years after an acute non-cardioembolic ischemic stroke or high-risk TIA.



09 patients recruited to date!

EVIS - Early vasopressors in sepsis - pragmatic randomised trial.

Once consent is received patients are randomised to a peripheral noradrenalin infusion (in addition to standard care) or standard care only. Recruiting patients in resus can be challenging but it is so important to deliver research to improve patient care in this environment.

Thank you to everyone involved and the much-appreciated support from the clinical team!

How can you help?



Highlight potential patients to the **EMERGE** team who will investigate further or ☎ Ext 23863



Hand out a Patient Information Sheet (PIS) when the research team are unavailable

